

WARNING DO NOT USE UNTIL ALL INSTRUCTIONS REGARDING SAFETY HAVE BEEN READ.



Use and Care Instructions for Paintball Vision System

One size fits all - Fits adult size: S / M / L



This product meets ASTM standards F 1776

CONGRATULATIONS!

Your new SENTRY™ VFORCE™ combines solid durability protection and comfort in a unibody constructed mask with the thickest shell in it's class. This mask protects from both 50cal and 68cal paintballs.

The renowned and reliable ARMOR™ lens design ensures distortion-free vision, enhancing your rapid target-acquisition efficiency and overall safety.

The unique Quick-Change™ system allows you to remove the lens eye foam, and strap in seconds for cleaning or interchanging so you are quickly back in the game.

An integrated visor protects from sunny conditions and doubles as a protective lens guard should your mask be off and accidentally thrown about.

Includes a built-in chin strap that keeps your mask super secure throughout play.

A Free-Flow ventilated design ensures maximum breathability in every playing condition.

Have fun, look great and always Play Safe!

GOGGLES ARE FOR PAINTBALL ACTIVITIES ONLY AND NOT FOR INDUSTRIAL USE.

PATENT(S): See www.paintballsolutions.com/patents © 2019 G.I. Sportz. All rights reserved. This G.I. Sportz product is protected by one or more United States patents. G.I. Sportz Trademarks, Designs and Copyrights are protected by one or more United States patents and International Law. For more information contact G.I. Sportz at info@gisportz.com

www.paintballsolutions.com

Meets or exceeds International Standards for:



CCQS Certification Services Limited
Block 1 Blanchardstown Corporate Park, Ballycoolin Road, Blanchardstown,
Dublin 15, D15 AKK1, Ireland
Notified Body: 2834

ENGLISH 2

WARNING

Read and follow carefully the instructions and warnings contained in this manual. Failure to observe all instructions and warnings could lead to severe or permanent injuries. Remember that your mask cannot offer protection in all situations.

- ALWAYS wear your mask with visor and chin strap securely attached as per instructions.

- NEVER remove your mask in th playing area, even if the lens fogs or gets dirty. If your mask accidentally comes off, throw yourself on the ground and protect your eyes. Tell the players to stop shooting and ask the referees or one of the other players to help you leave the area with your eyes covered.

- Before the beginning of the game, all paintball markers must be chronographed to ensure that the speed of the paintballs does not exceed 300 f.p.s. (91 m/s). Higher speeds could exceed the resistance limits of your mask and lead to serious or permanent injury. Do not play if the speed of the paintballs exceeds 300 f.p.s., or if speed is not verified.

- Always follow all safety rules regarding the game and the handling of paintball markers.

- In rare cases, any mask may cause irritation and should not be worn by persons who are subject to dermatitis. Discontinue the use of the mask immediately in case of irritation and consult your physician.

WARNING

This Vision System provides Extended Coverage as defined in ASTM standard F1776. This Vision System is designed to fit users of Adult Sizes Small, Medium and Large.

ENGLISH 3



TABLE OF CONTENTS

| | |
|-------------------------|----|
| Fitting | 4 |
| Mask and Lens Care | 5 |
| Lens Removal | 6 |
| Lens & Eye Foam Removal | 7 |
| Eye Foam Installation | 8 |
| Lens Installation | 9 |
| Chin Strap Installation | 10 |

FITTING

Check that the strap is inserted properly in the slots provided in the mask, and that it fits snugly around your head. Ensure that the foam around the lenses sits properly around your eyes. Ensure that the visor is also properly installed to the frame as per the instructions.

WARNING

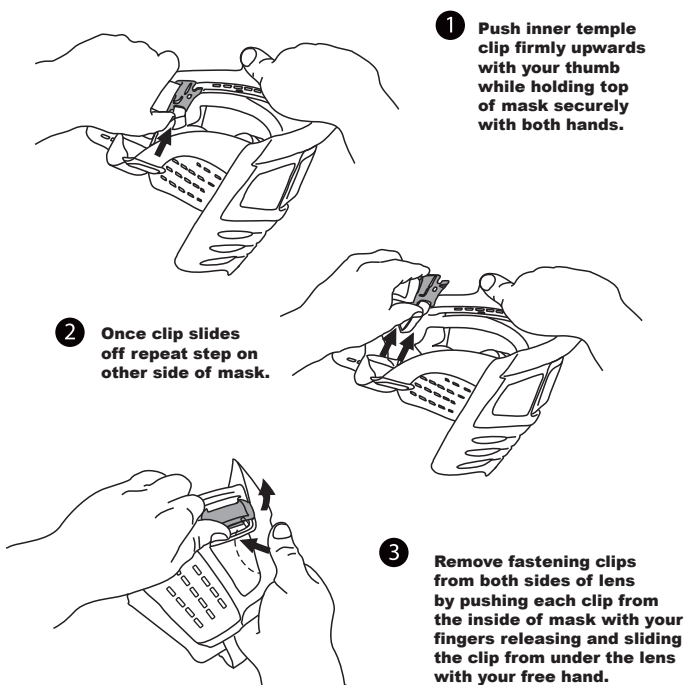
Wear your paintball protective Vision System at all times when playing, practicing or target shooting.

WARNING

Before each game, breathe on the inside surface of the lens. If it fogs up: before using your mask - replace the lens or treat it with VForce Anti-Fog Solution.

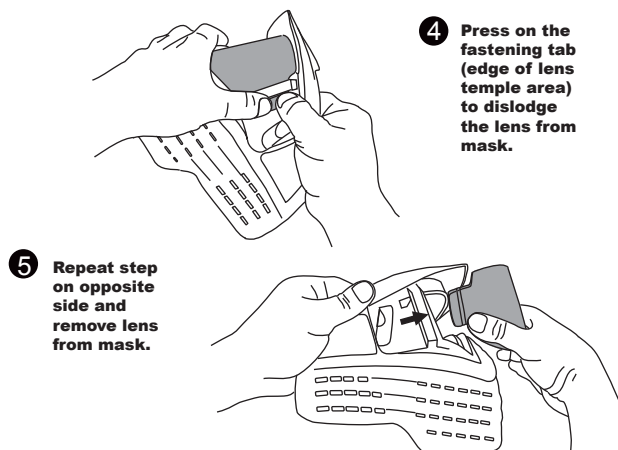
ENGLISH 4

LENS REMOVAL

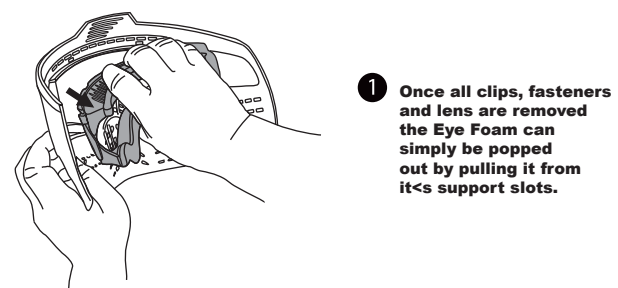


ENGLISH 6

LENS REMOVAL



EYE FOAM REMOVAL

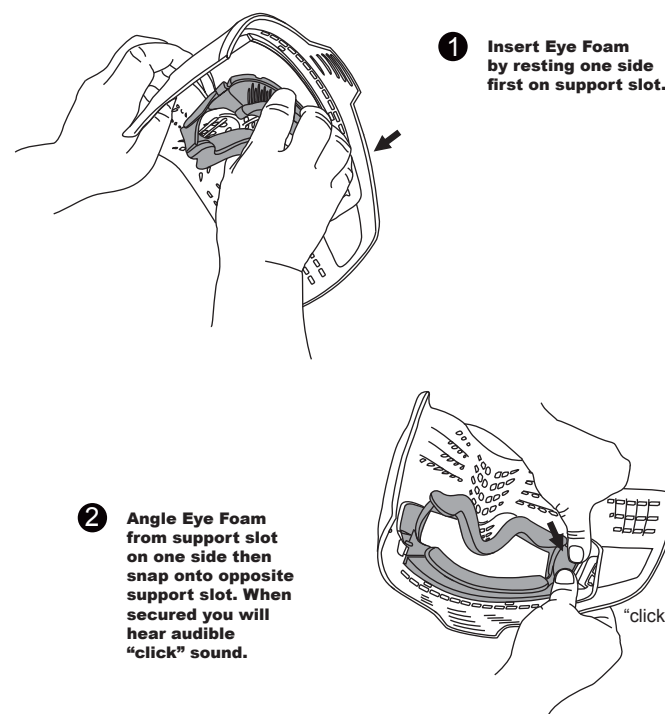


WARNING

Use only lenses specifically designed for this vision system model.

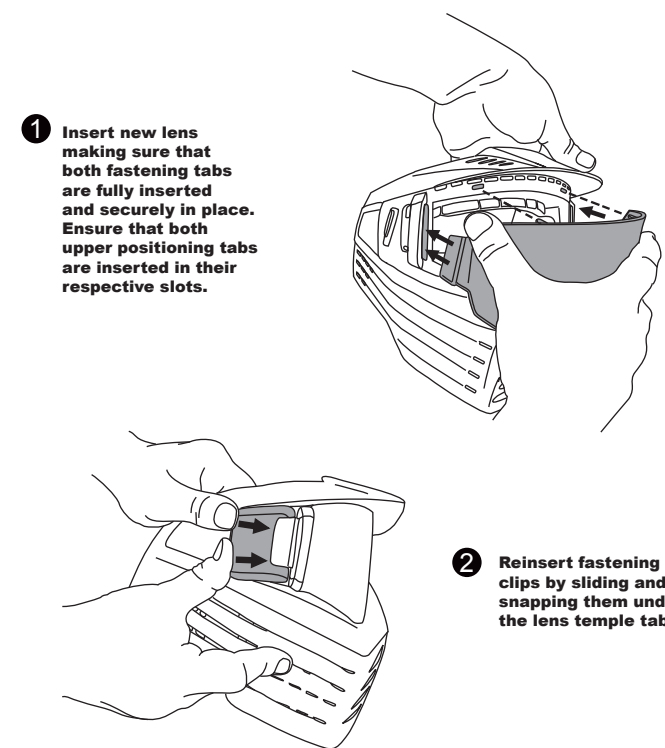
ENGLISH 7

EYE FOAM INSTALLATION



ENGLISH 8

LENS INSTALLATION



WARNING

Ensure that the lens is firmly in place before wearing the mask. Do not make any modifications to your mask. Use only accessories that have been approved for your Sentry mask by VForce. (The retention strap is not an ear protector.)

ENGLISH 9

MASK AND LENS CARE

Your SENTRY™ mask has a single-pane or dual-pane thermal polycarbonate lens that has been treated with a Thermo-Cured Anti-Fog coating. Further information on the lenses is provided in the last section of this manual.

CLEANING

- Clean your lens within two hours of any contact with paintball fills or residues. Remove the lens from the mask to ensure that all surfaces of the lens and the mask are thoroughly cleaned.

- Use only warm water or VForce anti-fog solution to clean the lens. Do not use any other products, as they may contain substances that may weaken the lens. Change the lens if it has come in contact with any chemical products or fumes.

- Use only a clean soft cloth to clean the lens. Avoid the use of substances that could scratch or dull the lens, such as a newspaper, paper towels, dish towels or clothing. It is normal for the anti-fog coating on the inside surface to go through a tacky phase while drying. To clean this surface, pat it with a moist cloth and let it dry. Do not wipe the inside surface - it will streak and you will have to clean the lens again.

ANTI-FOG TREATMENT

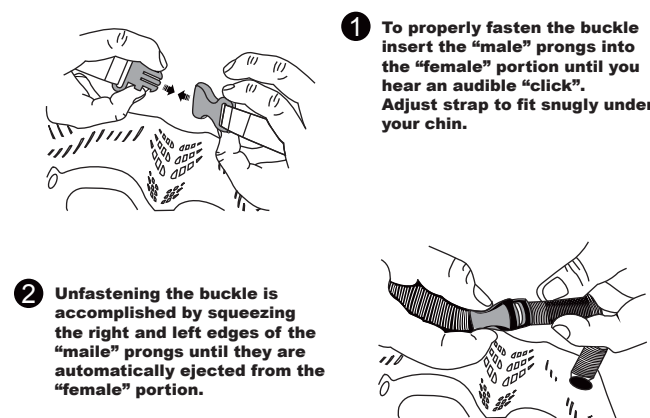
- Despite the extra-long life span of the VForce Anti-Fog, with time, all anti-fog treatments eventually lose effectiveness. If this happens, USE ONLY VForce Anti-Fog solution to reactivate. Do not use any other products, since their chemicals may weaken the lens.

STORAGE

- Ensure that your Sentry mask by VForce™ is clean before storing it. Protect the lens against impacts and scratches. Store your mask in a cool, clean and dry place, far from chemical products or fumes and protected from high temperatures.

ENGLISH 5

CHIN STRAP INSTALLATION



WARNING

NEVER play a game of paintball without the chin strap securely attached to the mask.



VFORCE™ Vision Systems
2955 Adams Center Road
Fort Wayne, IN 46803
www.vforce.com
MADE IN CANADA
VFORCE™ and GRILL™ are Registered Trademarks

G.I. Sportz Europe Ltd.
Adrenaline House Brooklands Park
Farningham Road
Crowborough TN6 2JD
Great Britain

V-Force™ is a brand of G.I. Sportz Direct, LLC.

ENGLISH 10